

*Redefining
Lifestyles*

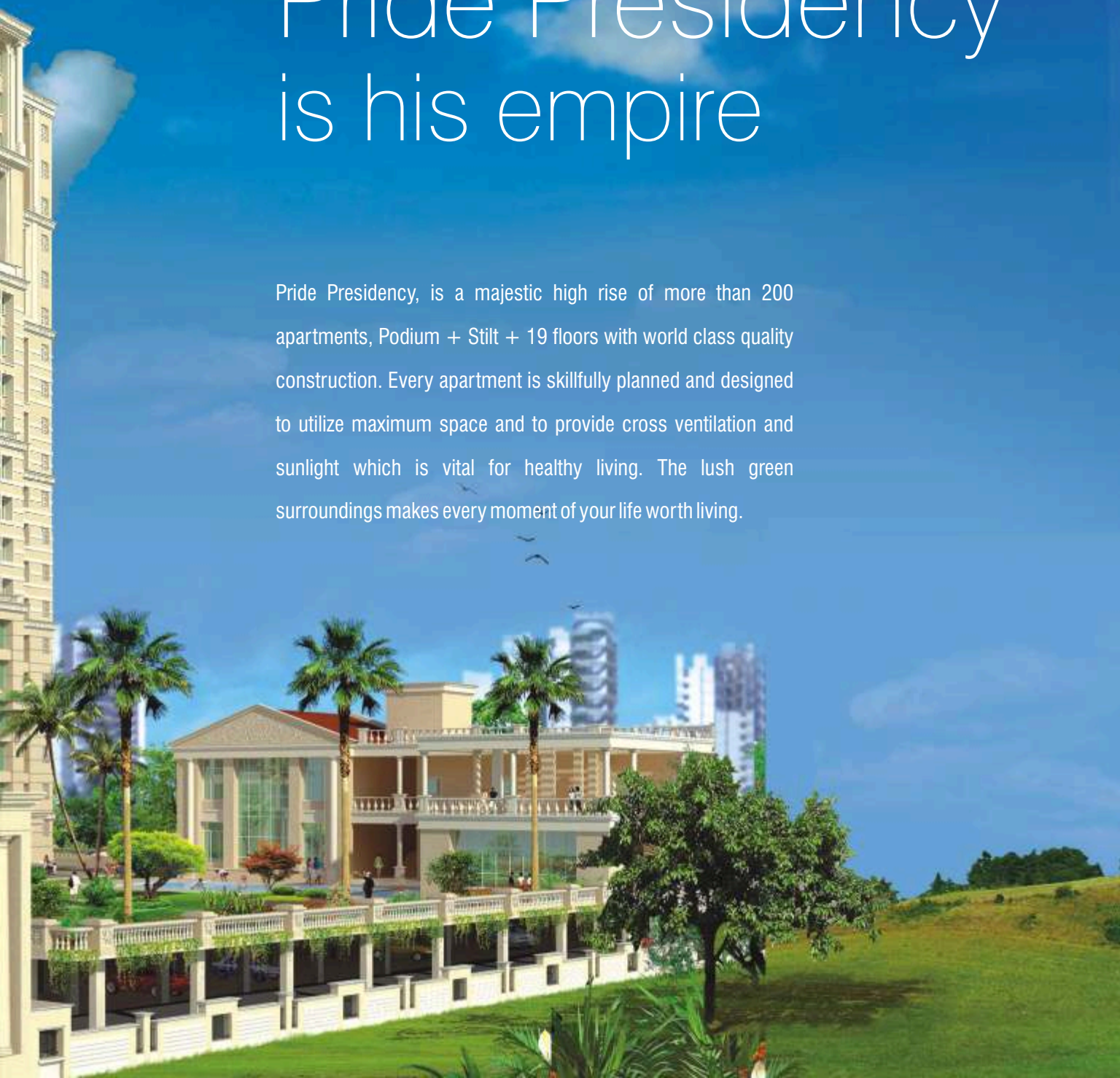




PRIDE PRESIDENCY

if a home is a man's kingdom Pride Presidency is his empire

Pride Presidency, is a majestic high rise of more than 200 apartments, Podium + Stilt + 19 floors with world class quality construction. Every apartment is skillfully planned and designed to utilize maximum space and to provide cross ventilation and sunlight which is vital for healthy living. The lush green surroundings makes every moment of your life worth living.





if perfect design and ambience is luxury, then you are in for a treat

All our efforts in our life are aimed at making our family happy. We strive hard to provide them a peaceful, secure and luxurious lifestyle. Pride Presidency is a premium residential project wherein comfort and security goes hand in hand and that's why all efforts have been made to give you ultra modern security arrangements along with world class amenities and a regal ambience.

This prestigious project is on rapid completion with 14 slabs already complete and the swimming pool is in its finishing touches. The Group is all set to accomplish their target date and these spacious affordable apartments will be made available from Dussehra 2010 onwards for everyone. So come and visit us to gaze and believe this extravagant project.





if bread is the first necessity of life, recreation is a close second

At Presidency relaxing in the spacious swimming pool or working out in a well equipped gymnasium will become a daily routine. We also have 1.5 acres (approx.) of beautifully landscaped podium garden with jogging track to keep your body in shape.

Spend your mornings and evenings revitalizing your mind and soul at the soothing yoga and meditation centre. You don't need to step out for any of your relaxation needs.

There is also a recreation zone for your children, a place of their own where they can play, experiment and make friends for life.





World Class Home Automation System

Pride Presidency offers truly tech-savvy apartments integrated with home automation devices such as Touch Screen Display, DHG Gateway, Door unit, Door Sensors, Motion Sensors, Lobby Hooter, Appliance Control, Remote Control, Visitor management system, Secure zones configuration, User management, Society Communication. Profiles can be defined to control security, create specific zones and achieve appliance automation. Home layout can be viewed and appliances controlled using LCO / Internet

Get complete control over your home at the touch of a button. Just make a call from a mobile, landline phone or access the internet and control your Secure Intelligent Home when you are away..

your home
at your
finger tip



Provided By



DIGIHOME SOLUTIONS

AFTEK GROUP COMPANY

An ISO 9001:2000 Certified Company.
www.digihome.co.in

make yourself comfortable and at ease with unsurpassed amenities

External Amenities

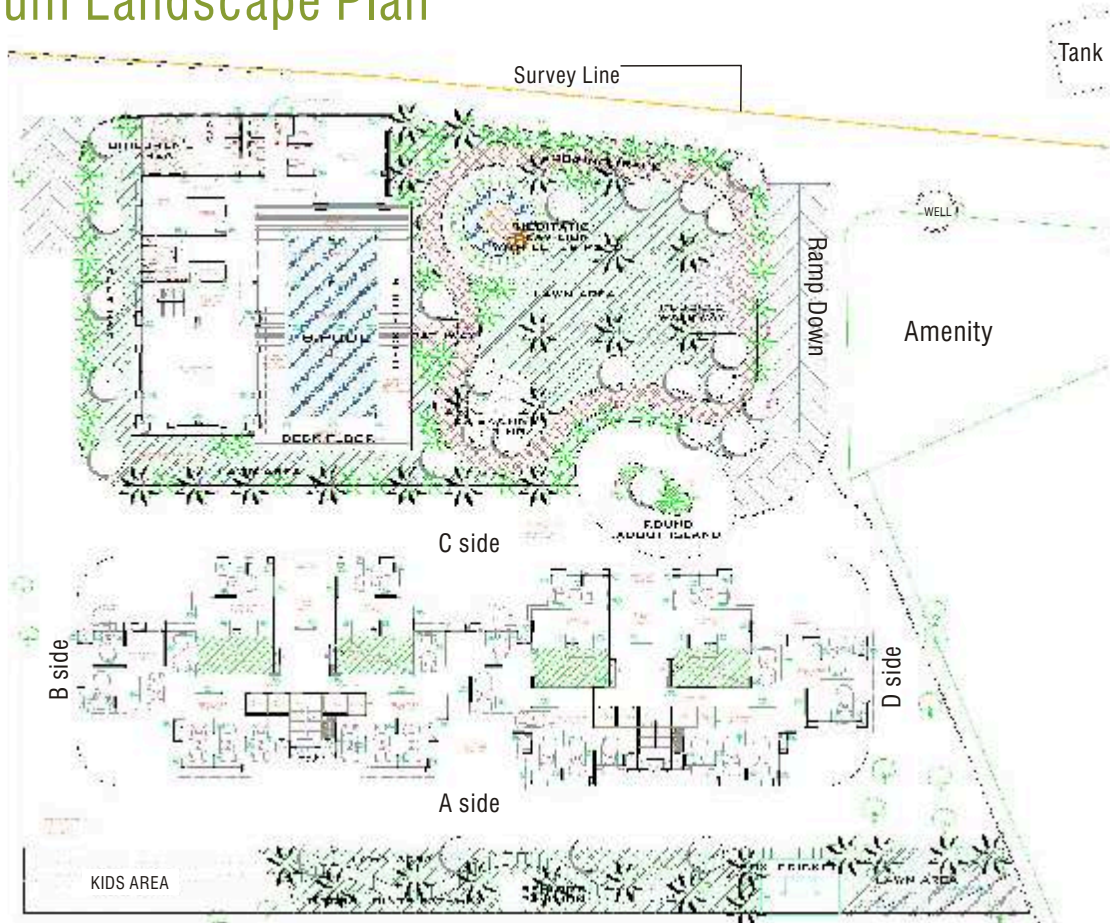
- Around 1.5 acres of podium garden with a Jogging track
- Clubhouse with a state-of-the-art Gymnasium
- Swimming pool with a kids pool
- Well equipped play area for children with creche
- Yoga and Meditation Center
- Covered Podium, stilt and open Car Parking
- Box cricket & Pebble walk

Internal Amenities and Security

- High glossy Italian marble print V.F. flooring
- Elegant Hansgrohe bathroom fittings & Roca sanitary ware
- Modular kitchen with service platform
- Video door phone and Intercom facility for maximum security
- Round the clock digital video recording
- Earthquake resistant structural design
- Well designed entrance lobby
- High speed elevators from reputed manufacturers
- All flats designed as per Vaastu
- World Class Home Automation System



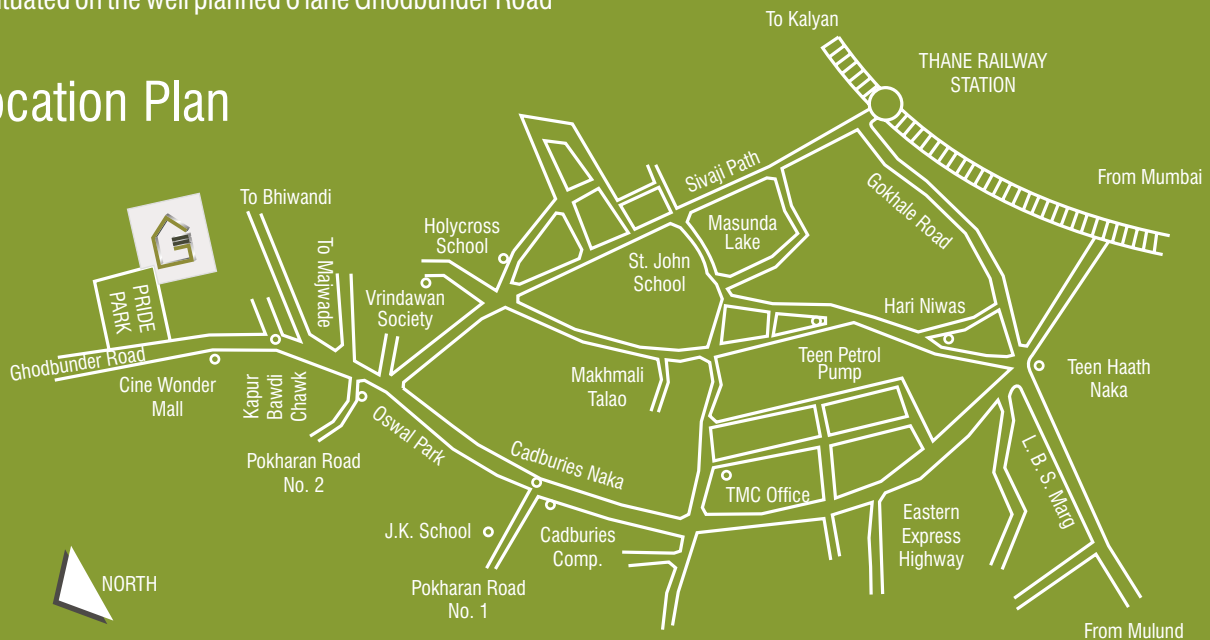
Podium Landscape Plan



Location Advantages

- Close to Big Bazaar, Cine Wonder Multiplex and shopping mall
- Proximity to Thane Station
- Schools, Colleges and Hospitals located nearby
- Huge shopping malls coming up around the project
- Easy accessibility to Central and Western suburbs
- Situated on the well planned 6 lane Ghodbunder Road

Location Plan



About Developers

Gala Group of companies has been actively involved in the field of construction and property development since the last 29 years. They have successfully completed many mega residential and commercial projects in Thane such as Pride Park, Highland Residency, Twinkle Tower and the most prestigious shopping mall of Thane “The Lake City Mall”.

Other Projects



Twinkle Residency



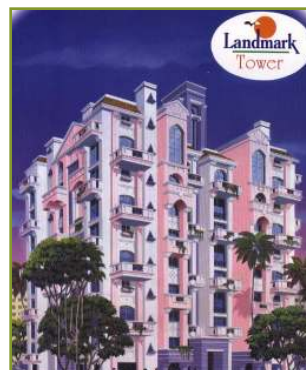
Landmark Avenue



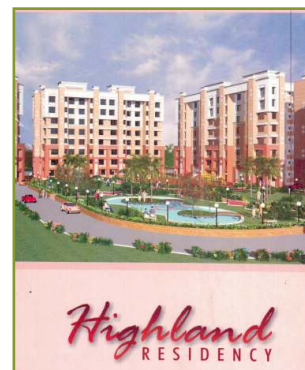
Pride Park - Ochna



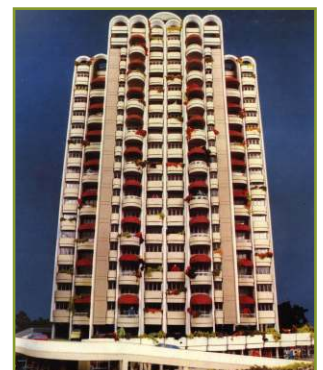
Pride Park



Landmark Complex



Highland Residency



Paradise Height



Mall



CARPET AREA STATEMENT	
FLATS NO.	CARPET AREA
01	704.56 sq.ft
02	878.50 sq.ft.
03	802.87 sq.ft.
04	802.87 sq.ft.
05	878.50 sq.ft.
06	704.56 sq.ft.

WING - A

TYPICAL FLOOR PLAN



CARPET AREA STATEMENT	
FLATS NO.	CARPET AREA
01	704.56 sq.ft
02	802.87 sq.ft.
03	802.87 sq.ft.
04	878.50 sq.ft.
06	704.56 sq.ft.

WING - B

TYPICAL FLOOR PLAN



BY GALA GROUP
PRIDE
PRESIDENCY
Luxuria

PRIDE PRESIDENCY

Our renowned panel...

Architect:
Archetype Consultants (I) Pvt. Ltd.

R. C. C. Consultant:
Epicon Consultant Pvt Ltd

Landscape Consultants:
Arun Kumar & Associates

Legal Advisor:
Dhruve Liladhar & Co.
R. D. Rashinkar

To get in touch with us...

Pride Presidency, B-104, Opp. Lawkim Company, Near Cine Wonder
Mall, Ghodbunder Road, Thane (W), Maharashtra, India.

Phone: 91-22-2589 6666 / 2589 6000 / 2589 6001

Fax: 91-22-2589 4444

Sales Office Phone: 91-22-25841822 / 1823 /1824

Email: sales@pridepresidency.com

galagr@pridepresidency.com

Website: www.pridepresidency.com

This brochure is purely conceptual and not a legal offering. The Promoters / Architects reserve the right to add / delete / alter any detail / specification / elevation mentioned herein. The brochure is inactive of how the future can be arranged in the flat. No furniture of any nature is to be supplied to the flat purchaser by the developer.

